

ROCKFACE



ANDREW BUCK

ROCKFACE

The Images

We drive by these kinds of walls nearly every day without noticing them. But the form, pattern, structure, and even mood present in them could be said to present a challenging beauty.



Andrew Buck's point of departure has always been the landscape, but always a landscape we have created, intentionally or inadvertently. In addition to documenting our presence on the land, he has also been very attendant to abstract aspects of the subject. This is the case with this series, his most purely abstract work to date.

All of the rock faces photographed were created by blasting through hills for road construction or for granite and trap rock quarrying. So, to a degree, these images are also concerned with how our presence in and impact on the natural landscape creates an entirely new landscape.

The Prints	Size	22" x 22"
	Medium	Pigmented Ink prints
	Paper	Hahnemuhle Photo Rag
	Mat size	30" x 30"
	Mat material	6 ply museum board, 100% acid free

All prints are signed and numbered.

Only 5 prints of each image will be made available for these portfolios: once five people have selected an image, it will no longer be available for purchase in a portfolio. The full edition size for prints this size is 10.

Selected images are available in a much larger format. Please contact the artist for more information.

The Portfolio	Portfolio Edition size	15
	Prints in a Portfolio	5 - chosen by the buyer

Each portfolio contains an insert with a personalized list of images and is signed and numbered.

Each portfolio box is hand-constructed, covered with Japanese linen, and is a lipped clamshell design.

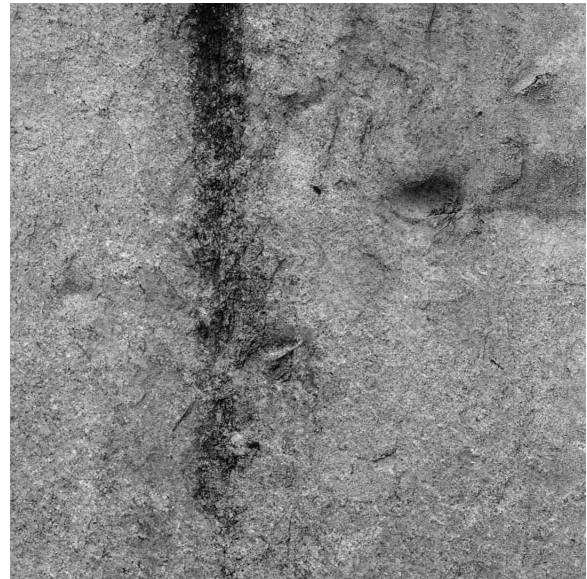
Price

Portfolios 1-10	\$2500
Portfolios 11-15	\$3000
Shipping	\$100

Payment and delivery timeframe

A deposit of 50% is required at the time of ordering. The balance is due when the portfolio is ready for delivery.

Due to the fact that each portfolio is a custom order, up to two months may be required to fulfill your order. However, every effort will be made to fulfill it more quickly.



Enclosed CD

The enclosed CD contains:

Forty-five jpeg images from the series from which you choose your 5 images. PDF documents of a statement, a brief bio, including exhibitions and other pertinent information, and this prospectus.

To view the images, double click on the file Rockface.html. There are instructions on the main page displayed describing how to continue. The images are quite high resolution, so may be a little slow to display.

Contact

Please contact the artist with any questions, or to discuss individual images or the portfolio.

Address 12 Orchard Rd
Farmington, CT 06032
Phone 860-676-2860 (before 8pm Eastern, please)
Email abuckphoto@gmail.com